

NUOVA MAPA

Table Leg and Table Top Sliding Mechanism



NUOVA MAPA ADJUSTABLE TABLE LEG WITH TURNTABLE AND SLIDING SYSTEM

The Nuova Mapa table leg is a fully adjustable telescopic table leg with turntable and slide system. This table can be easily adjusted into bed position if required. The bed position is factory set at 330mm and can be easily adjusted if another measurement is required.

NUOVA MAPA TABLE TOP SLIDING MECHANISM

The Nuova Mapa table top sliding mechanism is suitable for use on existing Wineglass table legs. The sliding mechanism retrofits in place of the standard (and immovable) table top mount.

It converts a Wineglass table from having a stationary table top, to having a table top that can slide left and right, forwards and backwards by utilising the lock lever. If the table top needs to swivel, simply loosen its connection to the table leg and swivel the table top to its required position and retighten.

NUOVA MAPA

Table Leg and Table Top Sliding Mechanism

400-02600

FEATURES:

- Easy to install by screwing the base plate into the floor
- Foot button makes it easy to raise and lower
- Under mount release lever allows table top to slide and swivel into required position
- Table top can move left or right, forward or back and swivel
- Metal bearings make for a smooth sliding action
- Aluminium sliding mechanism
- Solid and robust design
- Factory set at 330mm in the low position but can be easily adjusted to other heights
- Designed and manufactured in Italy

SPECIFICATIONS:

Maximum Height (from floor to underside of table):
710mm

Lowest Height: 330mm

Table Top Bracket Measurements: 700mm x 440mm

Base Diameter: 250mm

Weight Rating while in Bed Position: 100Kg

Adjustable Bed Position Heights: 330mm to 410mm
(Table top not included)



400-02610

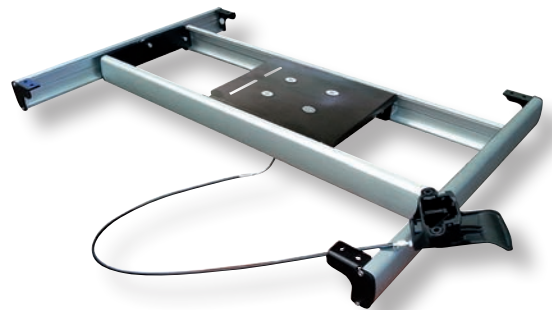
FEATURES:

- Creates more space around your table
- Retrofits on existing Wineglass table legs
- Under mount release lever allows table top to slide into required position
- Table top can move left or right, forward or back
- Metal bearings make for a smooth sliding action
- Aluminium sliding mechanism
- Solid and robust design
- Designed and manufactured in Italy

SPECIFICATIONS:

Table Top Bracket Measurements: 700mm x 440mm

Fits Table Legs From: 43mm – 50mm in diameter
(Table top not included)



DISTRIBUTED IN AUSTRALIA AND NEW ZEALAND BY:



Coast to Coast
CARAVAN & LEISURE

coastrv.com.au | coastrv.co.nz

Specifications are correct at time of printing and are subject to change without notice.

DEALER / SUPPLIER